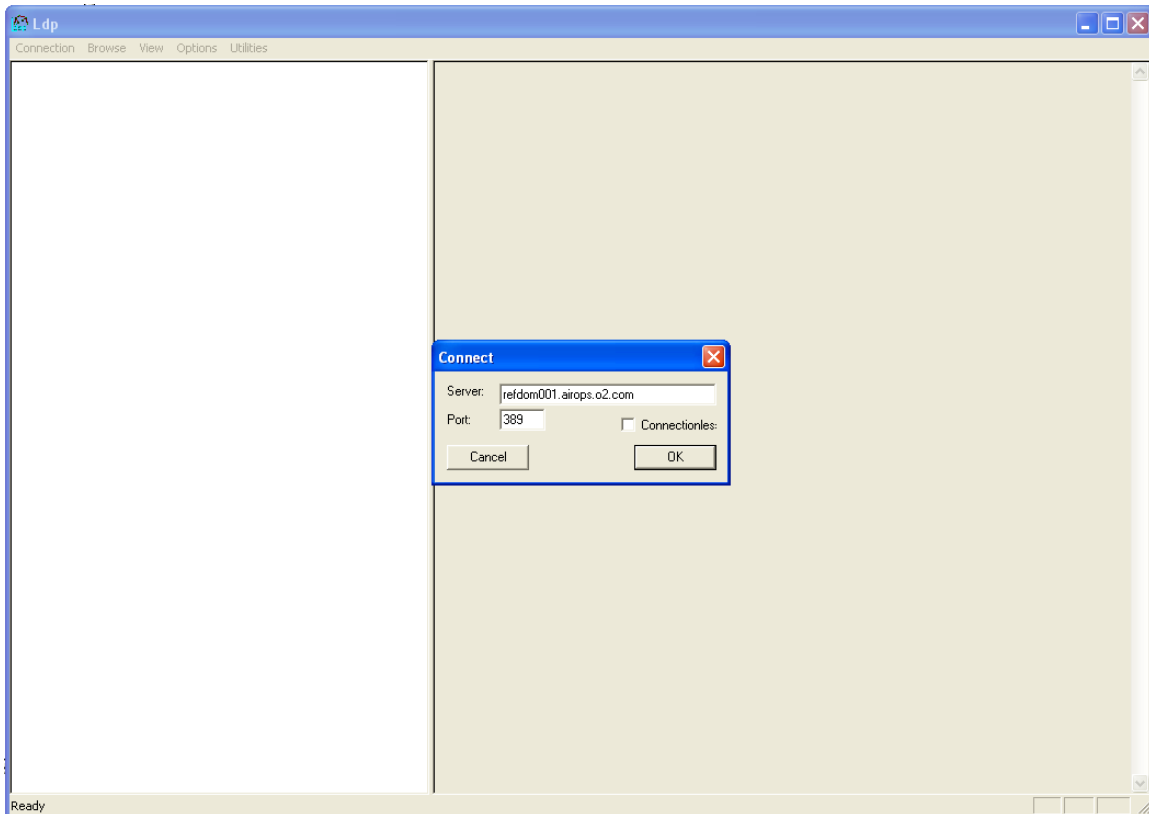


Using the Windows 'ldp.exe' tool to confirm LDAP username/password

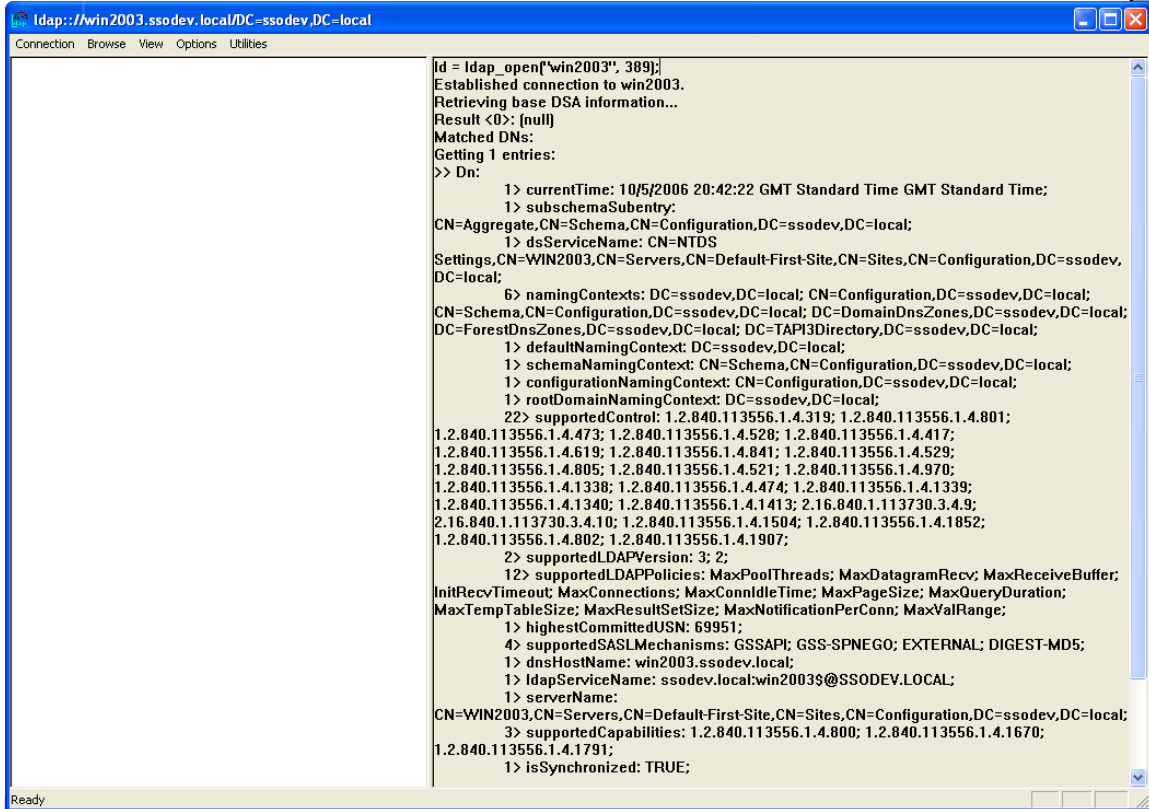
Run the ldp.exe program that can be found here:

<http://www.javasystemsolutions.com/support/downloads/ldp.exe>. You will be presented with the following screen.



Type in hostname, port and press OK.

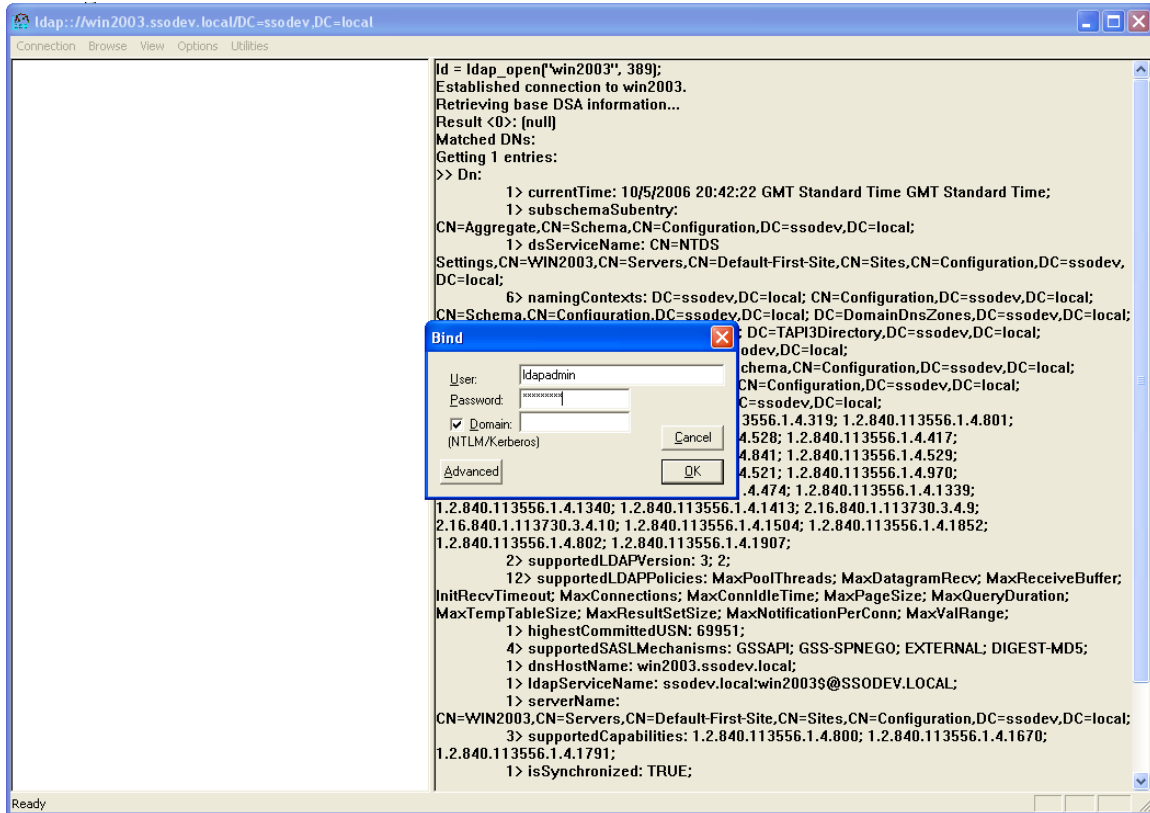
If this is successful then you should see some LDAP details such as below:



```
Idap://win2003.ssodev.local/DC=ssodev,DC=local
Connection Browse View Options Utilities

id = ldap_open("win2003", 389);
Established connection to win2003.
Retrieving base DSA information...
Result <0>: [null]
Matched DNs:
Getting 1 entries:
>> Dn:
    1> currentTime: 10/5/2006 20:42:22 GMT Standard Time GMT Standard Time;
    1> subschemaSubentry:
CN=Aggregate,CN=Schema,CN=Configuration,DC=ssodev,DC=local;
    1> dsServiceName: CN=NTDS
Settings,CN=WIN2003,CN=Servers,CN=Default-First-Site,CN=Sites,CN=Configuration,DC=ssodev,
DC=local;
    6> namingContexts: DC=ssodev,DC=local; CN=Configuration,DC=ssodev,DC=local;
CN=Schema,CN=Configuration,DC=ssodev,DC=local; DC=DomainDnsZones,DC=ssodev,DC=local;
DC=ForestDnsZones,DC=ssodev,DC=local; DC=TAPI3Directory,DC=ssodev,DC=local;
    1> defaultNamingContext: DC=ssodev,DC=local;
    1> schemaNamingContext: CN=Schema,CN=Configuration,DC=ssodev,DC=local;
    1> configurationNamingContext: CN=Configuration,DC=ssodev,DC=local;
    1> rootDomainNamingContext: DC=ssodev,DC=local;
    22> supportedControl: 1.2.840.113556.1.4.319; 1.2.840.113556.1.4.801;
1.2.840.113556.1.4.473; 1.2.840.113556.1.4.528; 1.2.840.113556.1.4.417;
1.2.840.113556.1.4.619; 1.2.840.113556.1.4.841; 1.2.840.113556.1.4.529;
1.2.840.113556.1.4.805; 1.2.840.113556.1.4.521; 1.2.840.113556.1.4.970;
1.2.840.113556.1.4.1338; 1.2.840.113556.1.4.474; 1.2.840.113556.1.4.1339;
1.2.840.113556.1.4.1340; 1.2.840.113556.1.4.1413; 2.16.840.1.113730.3.4.9;
2.16.840.1.113730.3.4.10; 1.2.840.113556.1.4.1504; 1.2.840.113556.1.4.1852;
1.2.840.113556.1.4.802; 1.2.840.113556.1.4.1907;
    2> supportedLDAPVersion: 3; 2;
    12> supportedLDAPPolicies: MaxPoolThreads; MaxDatagramRecv; MaxReceiveBuffer;
InitRecvTimeout; MaxConnections; MaxConnIdleTime; MaxPageSize; MaxQueryDuration;
MaxTempTableSize; MaxResultSetSize; MaxNotificationPerConn; MaxValRange;
    1> highestCommittedUSN: 69951;
    4> supportedSASLMechanisms: GSSAPI; GSS-SPNEGO; EXTERNAL; DIGEST-MD5;
    1> dnsHostName: win2003.ssodev.local;
    1> ldapServiceName: ssodev.local:win2003$@SSODEV.LOCAL;
    1> serverName:
CN=WIN2003,CN=Servers,CN=Default-First-Site,CN=Sites,CN=Configuration,DC=ssodev,DC=local;
    3> supportedCapabilities: 1.2.840.113556.1.4.800; 1.2.840.113556.1.4.1670;
1.2.840.113556.1.4.1791;
    1> isSynchronized: TRUE;
```

Then use the Connection menu and select Bind and fill in the details of ldapadmin:



If successful then you should see something like this but with ldapadmin as the user name:

```
res = ldap_bind_s(ld, NULL, &NtAuthIdentity, 1158); // v.3
{NtAuthIdentity: User='administrator'; Pwd= <unavailable>; domain = 'NULL'}
Authenticated as dn:'administrator'.
```

If you get a different output please send a screenshot and contact your domain admin.